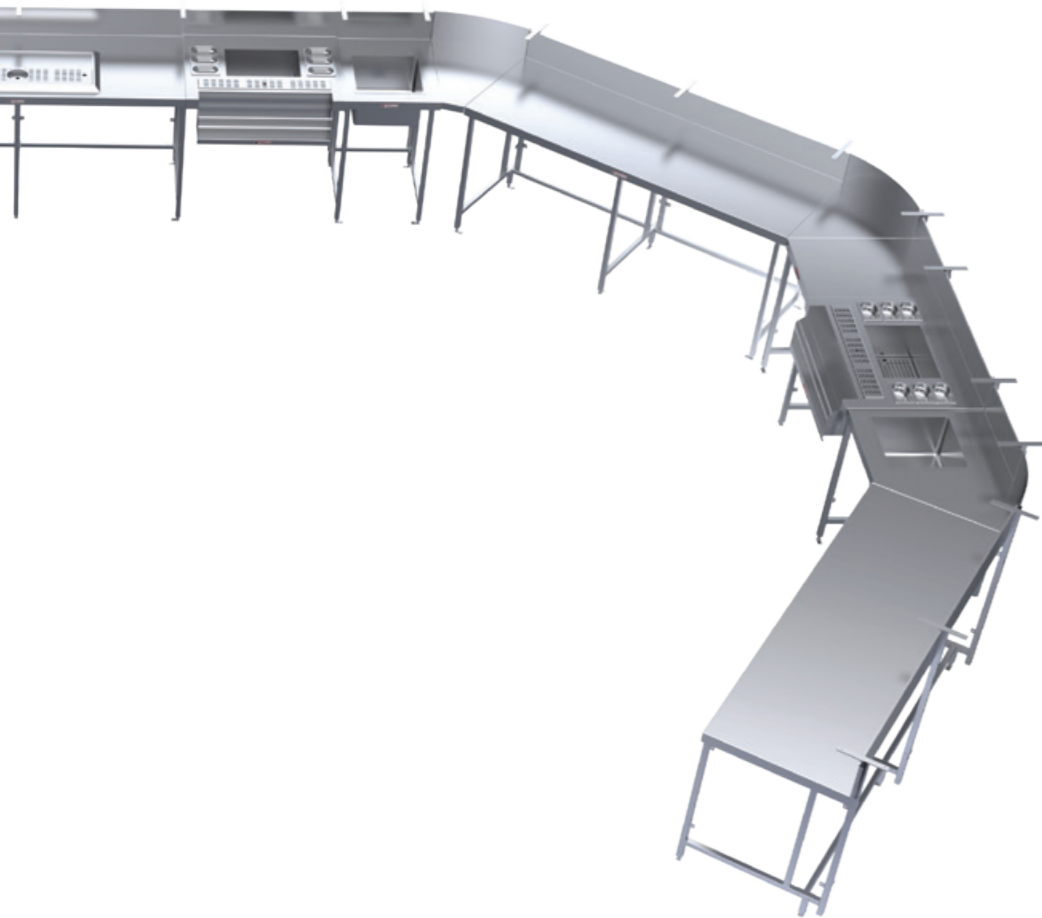


simply  
the best  
system



see inside for product index

simply  
the best  
service



Simply Stainless strives for quality, availability and value. To assist with your bar design, all drawings can be downloaded from our product catalogue at [www.simplystainless.com](http://www.simplystainless.com). We also offer a free bar design service, a free online design tool as well as a 3D product viewer - please get in touch with us for more details at [info@simplystainless.com](mailto:info@simplystainless.com). Full range is wholly manufactured out of an ISO9001 accredited factory that manufactures exclusively for Simply Stainless.



Available from



[www.simplystainless.com](http://www.simplystainless.com)

e-mail: [info@simplystainless.com](mailto:info@simplystainless.com)

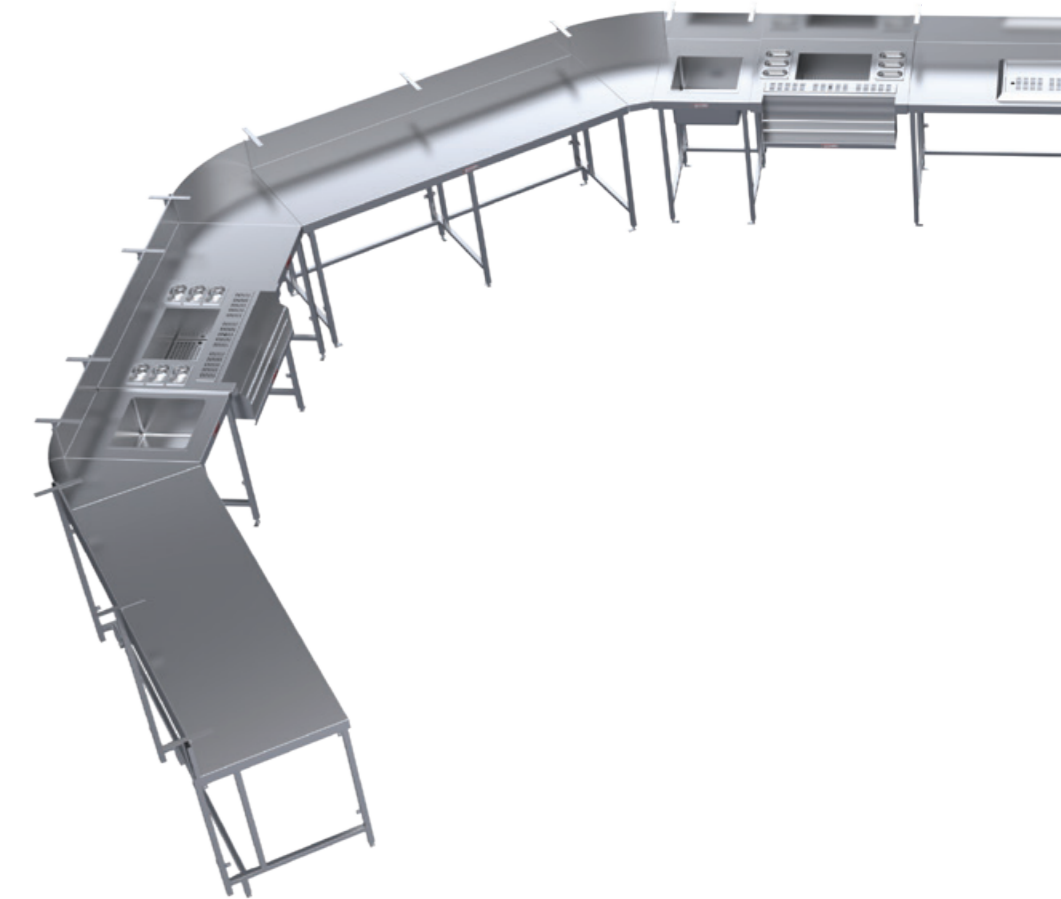


simply stainless reserves the right to change specification, price and design without notice.



[www.simplystainless.com](http://www.simplystainless.com)

simply  
available



See your local dealer  
for immediate delivery

simply  
the highest  
quality



**Single Bar Module  
600mm**



SBM-6-0600 | SBM-6-1800  
SBM-6-0900 | SBM-6-2100  
SBM-6-1200 | SBM-6-2400  
SBM-6-1500

**Single Bar Module  
700mm**



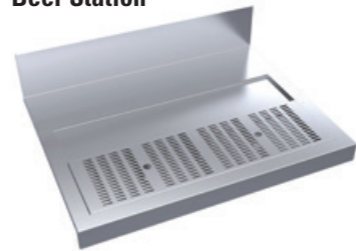
SBM-7-0600 | SBM-7-1800  
SBM-7-0900 | SBM-7-2100  
SBM-7-1200 | SBM-7-2400  
SBM-7-1500

**Blender Station**



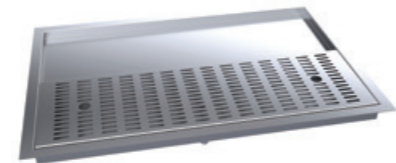
SBM-BL-6-0600  
SBM-BL-7-0600

**Beer Station**



SBM-BS-6-0950 | SBM-BS-7-0950  
SBM-BS-6-1300 | SBM-BS-7-1300

**Drop in Beer Station**



SBM-DBS-0600  
SBM-DBS-0900

**Countertop Beer Station**



SBM-CTBS-0600 | SBM-CTBS-1200  
SBM-CTBS-0900

**Drip Tray**



SBM-DT-0300 | SBM-DT-0900  
SBM-DT-0600

**Beer Station with Glass Rinser**



SBM-BS-GR-6-0950 | SBM-BS-GR-7-0950  
SBM-BS-GR-6-1300 | SBM-BS-GR-7-1300

**Drop in Beer Station with Glass Rinser**



SBM-DBS-GR-0600  
SBM-DBS-GR-0900

**Countertop Beer Station with Glass Rinser**



SBM-CTBS-GR-0600 | SBM-CTBS-GR-1200  
SBM-CTBS-GR-0900

**Drip Tray with Glass Rinser**



SBM-DT-GR-0300  
SBM-DT-GR-0600



**Glass Rinser**



SBM-GR

**End Panel Kit**



SBM-6-EPK  
SBM-7-EPK  
SBM-SOS

**Sinks**



SBM-HB (200 x 300 x 185)  
SBM-WS (400 x 400 x 250)

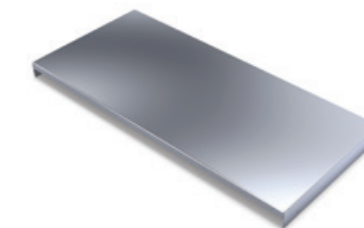


**Undercounter DW  
Basket Rack**



36.DBS

**Bar Module Undershelf**



SBM-US-6-0600 | SBM-US-7-0600  
SBM-US-6-0900 | SBM-US-7-0900  
SBM-US-6-1036 | SBM-US-7-1036  
SBM-US-6-1186 | SBM-US-7-1186  
SBM-US-6-1200 | SBM-US-7-1200  
SBM-US-6-1500 | SBM-US-7-1500  
SBM-US-6-1800 | SBM-US-7-1800  
SBM-US-6-2100 | SBM-US-7-2100  
SBM-US-6-2400 | SBM-US-7-2400

simply  
the best value



**Undercounter Glass Rack**



36.GR

**Ice Wells**



41.IWS (400 x 400 x 225)  
41.IWB (775 x 480 x 300)

**Modular Bar Specification**

SPECIFICATIONS 600 & 700 SERIES

**Tops**

- 1.2mm SUS304 grade stainless steel, no. 4 finish
- 30mm x 6mm flat bar for servery fitting

**Core**

- 3mm zincanneal
- Marine grade protective coat

**Frames/Legs**

- 30mm square stainless steel tube
- 1.2mm wall thickness
- Stainless steel lug feet
- Adjustable by 30/40mm
- 150mm services gap between rear legs

**Undershelves (optional)**

- 1.2mm stainless steel, no. 4 finish, top hat reinforcement

**Beer Stations**

- 1.2mm SUS304 grade stainless steel, no. 4 finish
- Integrated glass rinsers available
- 20mm polyurethane board for front connection
- Designed as either a bridge between modules, drop in or countertop

**Cocktail Stations**

- 1.2mm SUS304 grade stainless steel, no. 4 finish
- Insulated ice well with raised edge
- Speed rail with fully welded rod
- Designed as a bridge between modules
- Integrated drip tray

SBM-BR-6-0650  
SBM-BR-7-0650

SBM-SR-0560  
SBM-SR-0815

SBM-CS-6-0950  
SBM-CS-7-0950